

DT-DL SERIES, LARGE APERTURE DC Current Transducers

DT Series Large Aperture DC Current Transducers combine a Hall effect sensor and signal conditioner into a single package for use in DC current applications up to 1200 A. The DT Series Large Aperture Transducers have factory set and calibrated ranges, industry standard 4–20 mA, 0–5 VDC or 0–10 VDC outputs, and are available in solid-core DIN rail mount case.

DC Current Transducer Applications

Battery Banks

- Monitor load and charging currents.
- Verify operation.

Transportation

- Measure traction power or auxiliary loads.

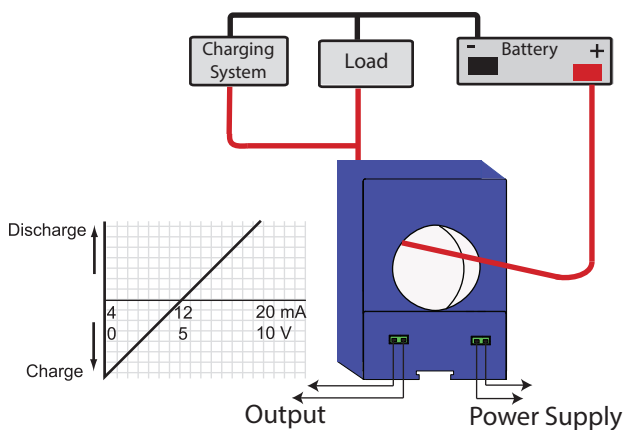
Wind and Solar Generated Power

- Measure the current produced or consumed.
- Detect mechanical problems before failure occurs.

Monitor DC Powered Motors

- Monitor current of cranes, saws, sorters and positioning equipment.

Battery Charging System



For additional Application Examples, go to www.nktechnologies.com/applications



DC Current Transducer Features

Factory Set and Calibrated Ranges

- No need for field calibration.
- Eliminates zero and span pots.

Isolation

- Output is magnetically isolated from the input for safety.
- Eliminates insertion losses, no added burden.

Internal Power Regulation

- Works well, even with unregulated power.
- Cuts installation cost.

DIN Rail Mounted Case*

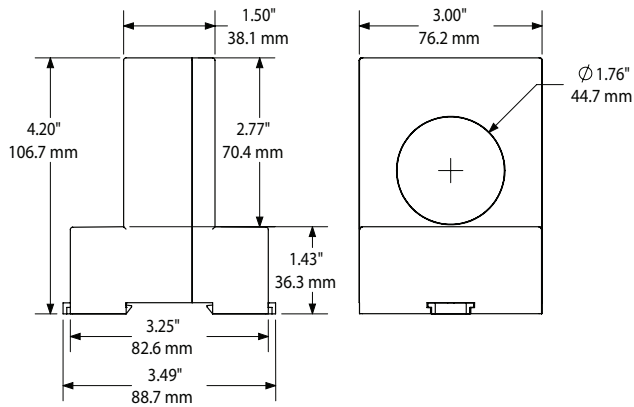
- Makes installation a snap.
- No drilling or screws to lose.
- Optional DIN rail kit available for chassis mounting.*

UL/cUL and CE Approved

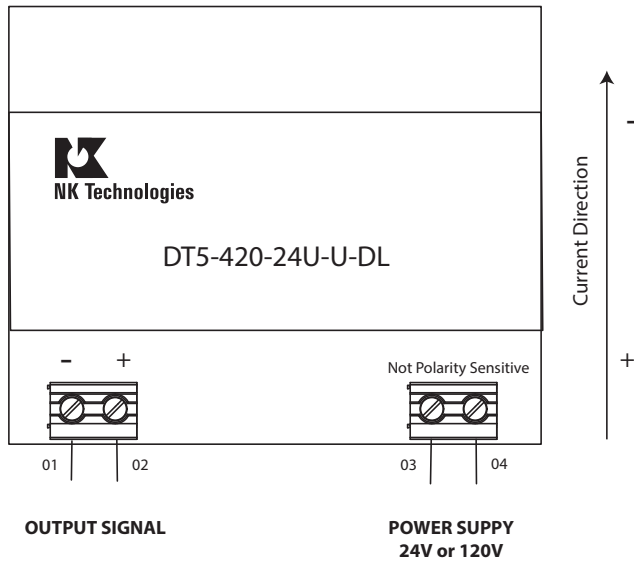
- Accepted worldwide.

*For information on the DIN rail accessories kit, see page 147.

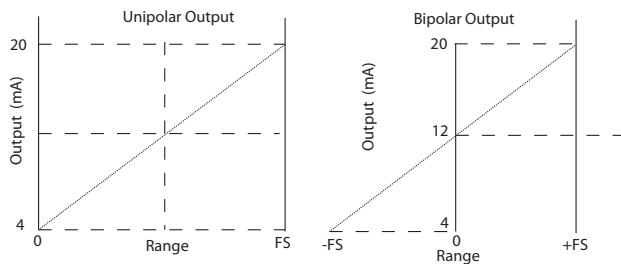
DC Current Transducer Dimensions



DC Current Transducer Connections



DC Current Transducer Output



Notes:

Deadfront captive screw terminals.

12–22 AWG solid or stranded.

Observe polarity.

Unipolar Output: Signal With Current flowing in one direction only.

DC Current Transducer Specifications



Power Supply	<ul style="list-style-type: none"> • 120 VAC (+/- 10%) • 24 VAC/VDC (+/- 10%)
Power Consumption	2 VA
Output Signal	4–20 mA, 0–5 VDC, 0–10 VDC
Output Limit	<ul style="list-style-type: none"> • 4–20 mA: 23 mA • 0–5 VDC: 5.75 VDC • 0–10 VDC: 11.5 VDC
Output Loading	<ul style="list-style-type: none"> • 4–20 mA: 500 Ω max. • 0–5 VDC: 25 KΩ min. • 0–10 VDC: 50 KΩ min.
Accuracy	2.0% FS
Repeatability	1.0% FS
Response Time	100 ms (to 90% of step change)
Input Range	0–1200 A DC
Frequency Range	DC
Isolation Voltage	UL listed to 1480 VAC, tested to 3 KV (monitored line to output)
Case	UL94 V-0 Flammability Rated
Environmental	-4 to 122°F (-20 to 50°C) Surrounding Temperature 0–95% RH, non-condensing
Listings	UL/cUL, CE

DC Current Transducer Ordering Information

Sample Model Number: DT6-420-24U-U-DL

Solid-core DC current transducer, 0–500 A range, 4–20 mA, 24 VAC/VDC powered, unipolar output.

DT (1) - (2) - (3) - (4) - (5)

(1) Full Scale Range

5	300 A
6	500 A
7	750 A
8	1000 A
9	1200 A

(3) Power Supply

24U	24 VAC/VDC
120	120 VAC

(4) Output Polarity

U	Unipolar
BP	Bipolar

(2) Output Signal

420	4–20 mA
005	0–5 VDC
010	0–10 VDC

(5) Case Style

DL	Solid-core, DIN rail mounting
----	-------------------------------