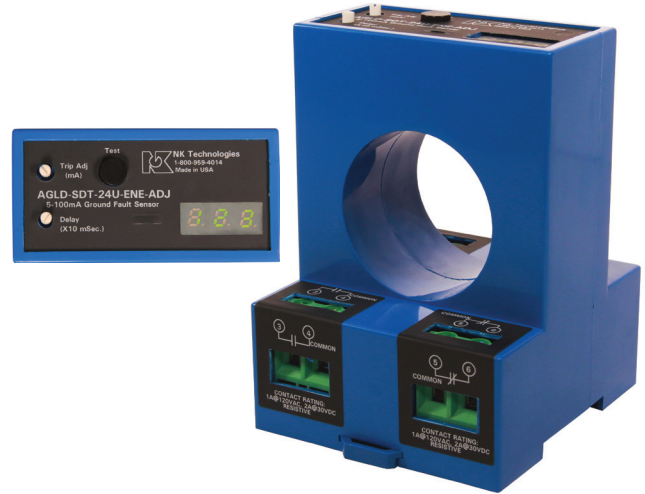


AGLD SERIES

Ground Fault Sensor with Digital Display

AGLD Series Ground Fault Sensors keep machinery and their operators safe from accidental shocks. The large, one piece solid-core design allows for installation over wires feeding heavy loads. The output relay will change state at any point between 5 and 100 mA, or 80 and 950 mA. A delay can be set to allow down stream protection to activate before this sensor, keeping the main circuit protection hot and the equipment energized while the smaller faults are cleared. The large LED display shows the precise trip point and the extra delay clearly, in any light condition. The display flashes when there is current sensed over the trip point.



Ground Fault Sensor Applications

Monitor Large Machines

- Detect fault currents before damage can occur. Connect the output to a shunt trip breaker operating solenoid or to the circuit powering a connector coil.

Water Delivery and Treatment

- Detect moisture ingress in submersible pumps.

Heating Processes

- If an element shorts to ground, the sensor will activate to de-energize the circuit, keeping safety at the forefront.

Ground Fault Sensor Features

Electromechanical Relay Output

- Provides both normally open and normally closed contacts.
- Compatible with most automation and control systems.

Externally Powered

- A choice of fail safe or standard operation.

Simple Field Setpoint Adjustment

- Single turn potentiometer with setpoint shown on display.
- Adjustable delay shown when knob is turned.

Large Solid-core Case

- Large sensing window provides ample space for multiple conductors.

DIN Rail Mount*

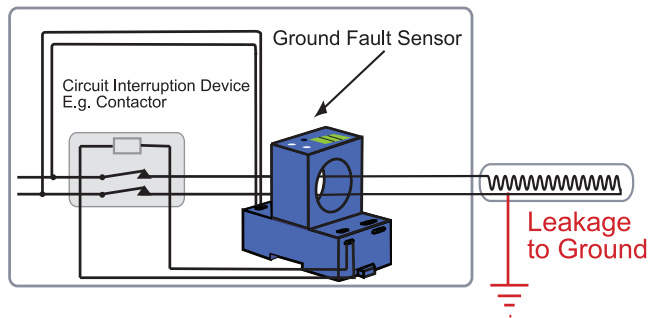
- Simple snap onto DIN rail.

UL/cUL Approved, CE

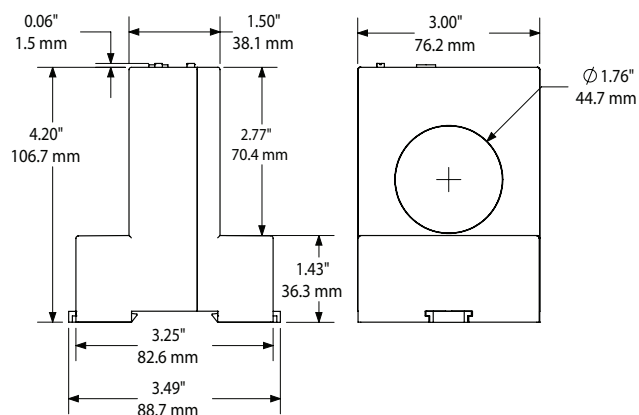
- Accepted worldwide.

*For information on the DIN rail accessories kit, see page 147.

Insulation Breakdown

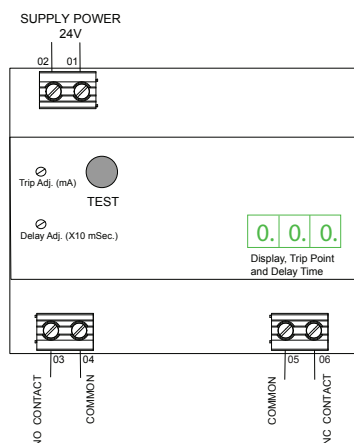


Ground Fault Sensor Dimensions

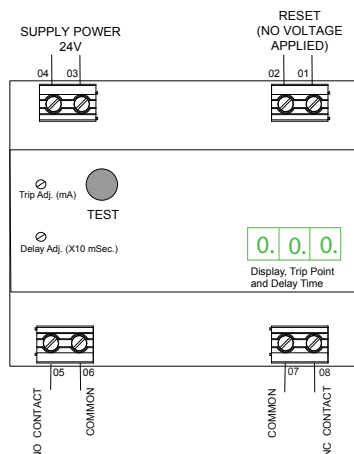


Ground Fault Sensor Connections

Auto Reset



Latching



Ground Fault Sensor Specifications



| | |
|--------------------------|---------------------------------------------------------------------------------------------------|
| Power Supply | • 24 VAC/VDC (20-30 V) |
| Power Consumption | <4 VA |
| Setpoint Range | AGLD1: 5–100 mA AGLD2: 80–950 mA |
| Output Switch | Electromechanical SPDT relay |
| Output Rating | 1 A @ 120 VAC, 2 A @ 30 VDC max. |
| LED Display | • Displays trip point in mA • Displays delay period when adjusted (ms X10) • Off: Power off |
| Response Time | 120 ms |
| Output Operation | Normally energized or normally de-energized |
| Time Delay | 1 second (adjustable after startup) |
| Isolation Voltage | UL listed to 1240 VAC |
| Frequency Range | 50–60 Hz (monitored circuit) |
| Case | UL94 V-0 Flammability Rated |
| Environmental | –4 to 104°F (–20 to 40°C) Surrounding Air 0–95% RH, non-condensing |
| Listings | UL/cUL, CE |

Ground Fault Sensor Ordering Information

Sample Model Number: AGLD1-SDT1-24U-ENE-ADJ

AC ground fault sensor, 5–100 mA range, SPDT switch output, 24 VAC/VDC powered, normally energized relay, large case, DIN rail mounting.

(1) (2) (3) (4) (5)

AGLD - S D T 1 - - - A D J

(1) Model

| | |
|---|-----------|
| 1 | 5–100 mA |
| 2 | 80–950 mA |

(2) Output Type

| | |
|------|---------------------------------|
| SDT1 | Single pole, double throw relay |
|------|---------------------------------|

(3) Power Supply

| | |
|-----|------------|
| 24U | 24 VAC/VDC |
|-----|------------|

(4) Contact Action

| | |
|-----|-----------------------|
| DEN | Normally de-energized |
| ENE | Normally energized |
| LA | Latching output |

(5) Setpoint

| | |
|-----|---------------------|
| ADJ | Adjustable setpoint |
|-----|---------------------|

